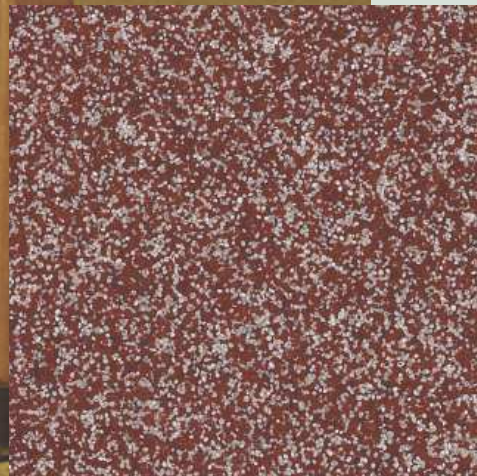
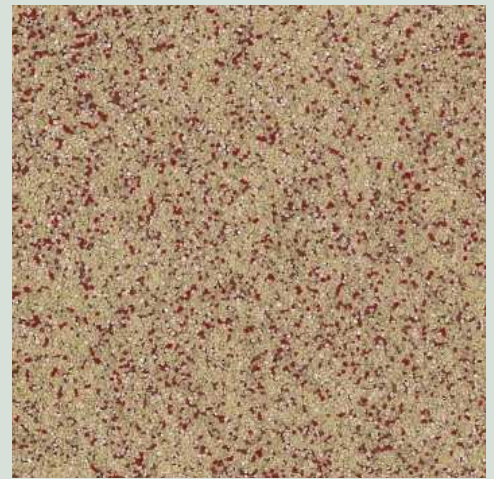


HYBRI-FLEX[®]

HYBRID
FLOORING
SYSTEMS



Floor installation services provided by:
**GUARDIAN INDUSTRIAL
PRODUCTS, INC.**

150 Dedham Street
Norfolk, MA 02056
Phone: 1-800-649-0213
Fax: 1-508-384-0064



DUR-A-FLEX[®]
INNOVATION FROM THE FLOOR UP



Each year, property owners spend an estimated \$2.4 billion dollars on facility repairs as a result of moisture-related flooring failures. Hybri-Flex® flooring systems were created to help solve the problems of flooring failure due to moisture migration.



All Hybri-Flex systems start with our unique basecoat system and, when combined with any of our three application-specific build and topcoats, provide the highest performance resinous floor systems on the market today.

BUILT-IN MOISTURE MITIGATION SYSTEM - Tolerates elevated moisture levels and can be installed in as few as 5 days after concrete pour*.

SELF PRIMING IN MOST APPLICATIONS - Completely eliminates a step and one day in the installation process.

SUPERIOR BONDING - The cementitious basecoat bonds to concrete better than most floor systems.

CONTRIBUTE TO LEED® CREDITS

CUSTOM COLOR MATCHES AND BLENDS AVAILABLE



*Consult your local Dur-A-Flex representative for concrete mix design specifications.



HYBRI-FLEX Series E

Utilizes our epoxy topcoats in applications where you need:

- An economical and cost effective floor solution
- Stain and wear resistance
- Impact resistance

Hybri-Flex EQ

A decorative color quartz system available in blended and solid colors and in two grades: Q28 (fine) and Q11 (coarse).

Hybri-Flex EC

A decorative chip system available in standard and custom (Macro only) blended colors and in two sizes: Macro and Micro.

Hybri-Flex EB

A natural quartz system utilizing neutral-colored aggregate with pigmented coatings. Quartz is available in two grades: Flintshot (fine) and Q-Rok (coarse).

Hybri-Flex ES

A smooth finish system utilizing solid color resins with our wear resistant Armor Top® coating.

HYBRI-FLEX Series M

Utilizes our methyl methacrylate (MMA) topcoats in applications where you need:

- The fastest installation with minimal downtime
- Excellent wear resistance
- UV light resistance for indoor and outdoor use

Hybri-Flex MQ

A 100% solids, decorative quartz system utilizing colored quartz aggregates with clear coatings. Quartz is available in two grades: Q28 (fine) and Q11 (coarse).

Hybri-Flex MC

A 100% solids, decorative chip system available in standard and custom (Macro only) blended colors and in two sizes: Macro and Micro.

Hybri-Flex MB

A 100% solids, natural quartz system utilizing neutral-colored aggregate with pigmented coatings. Quartz is available in two grades: Flintshot (fine) and Q-Rok (coarse).



HYBRI-FLEX Series A

Utilizes our poly-aspartic topcoats in applications where you need:

- No odor or fumes during installation
- Fast installation and cure time
- A high gloss finish

Hybri-Flex AQ

A 100% solids, no odor, decorative quartz system. Quartz is available in blended and solid colors and in two grades: Q28 (fine) and Q11 (coarse).

Hybri-Flex AC

A 100% solids, no odor, decorative chip system available in standard and custom (Macro only) blended colors and in two sizes: Macro and Micro.



CA 01350
COMPLIANT

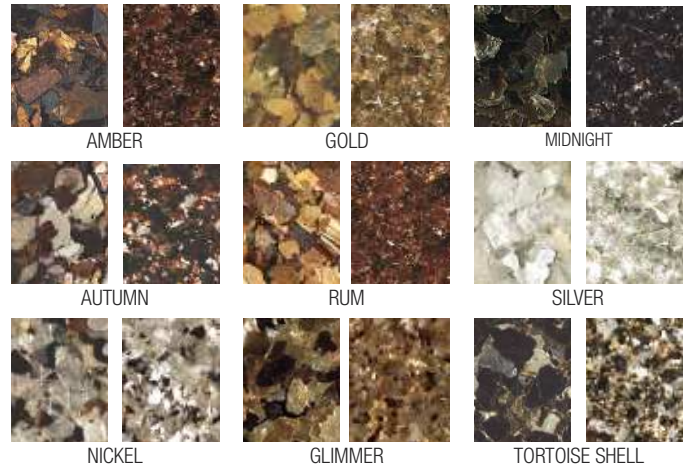
The samples shown are only close approximations and should not be used for specification purposes.
 Contact Dur-A-Flex to obtain actual samples for best color selection.

Standard Colors



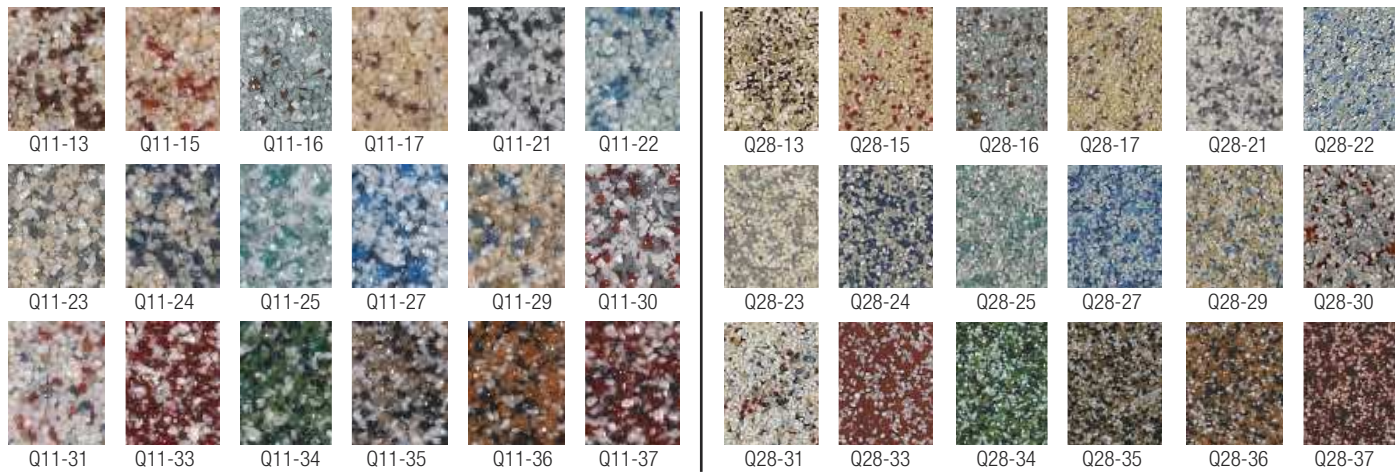
*Not available in MMA #Not available in Armor Top **Not available in Shop Floor

Mica-Flake

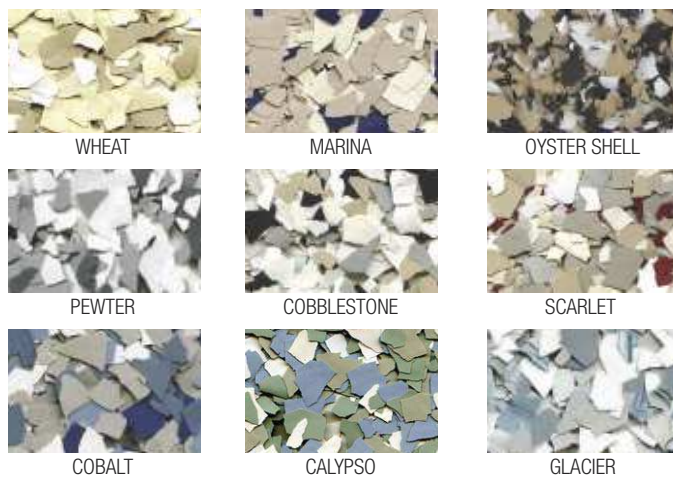


All mica samples shown contain metallic flakes. Available in macro and micro sizes.

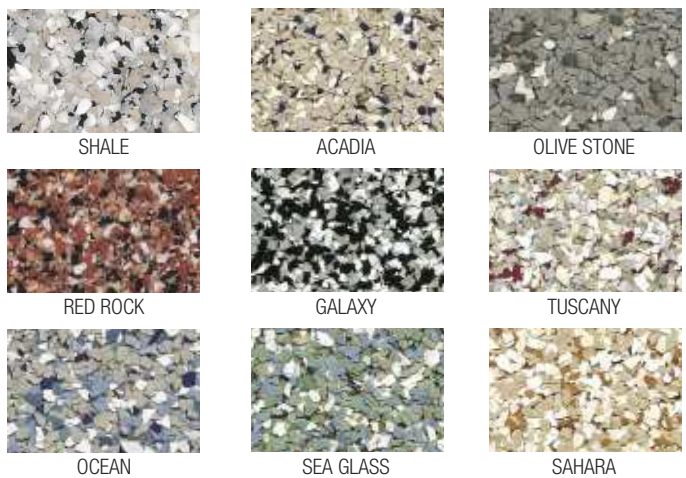
Quartz Blends



Macro Chip Blends



Micro Chip Blends



No one makes it easier to select, specify and install high performance flooring systems than Dur-A-Flex. Every step of the way, you'll experience superior customer service, professionalism and expertise as well as finely tuned processes—all the essentials which contribute to a solid business relationship.

